

RARE OPPORTUNITY

OFFICE CONDO FOR SALE

450 LEXINGTON STREET – UNIT 204

NEWTON, MA 02466

Commonwealth Commercial Advisors is pleased to present a rare opportunity to acquire a 1,738 SF office condominium in the heart of Auburndale. Ideally suited for professional service firms, this move-in ready suite features a sunny southern exposure, oversized windows, high ceilings, gleaming hardwood floors, a glass-enclosed reception area, conference room, kitchenette, and a mix of private and open offices. Located just minutes from Interstate 90 and Interstate 95, and approximately 16 minutes to Boston, the property also offers walkable access to village dining, Starbucks, and commuter rail and Green Line service. The professionally managed, boutique building includes elevator access, ample on-site parking via a private drive, and a strong mix of established firms, with ongoing upgrades enhancing long-term value.





Unit Size: 1,738 SF – 2nd Floor

of Condo Units: 8 total

Year Built: 1985

Lot Size: 45,473 SF

Parking: 6 deeded spaces

Fire Protection: Fully Sprinklered

Zoning: BU2/VC2

Current Uses: Office

Recent & Planned Updates:

- New Front Entry Doors
- Sidewalk Replacement
- Common Area Updating (new carpeting/paint)
- Parking Lot Paving

SALES PRICE

\$740,000

EXTERIOR



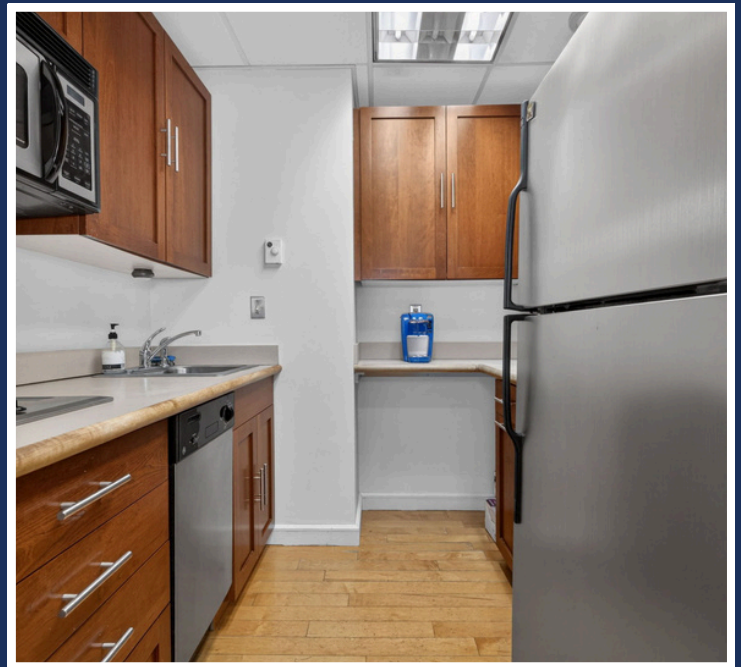
COMMON AREAS



INTERIOR



INTERIOR



All information furnished is from sources deemed reliable but no warranty or representation is made to the accuracy.

STEFAN FREY
Founder/President
stefan@ccadvisors.net
617-596-7833

TIM COYLE
Senior Vice President
tcoyle@ccadvisors.net
617-970-7232

195 Worcester Street
Suite 201
Wellesley, MA 02481
617-970-7232