

PRIME OFFICE/RETAIL

SPACE FOR LEASE

991 WATERTOWN STREET, NEWTON

Available NOW

3,000 SF endcap

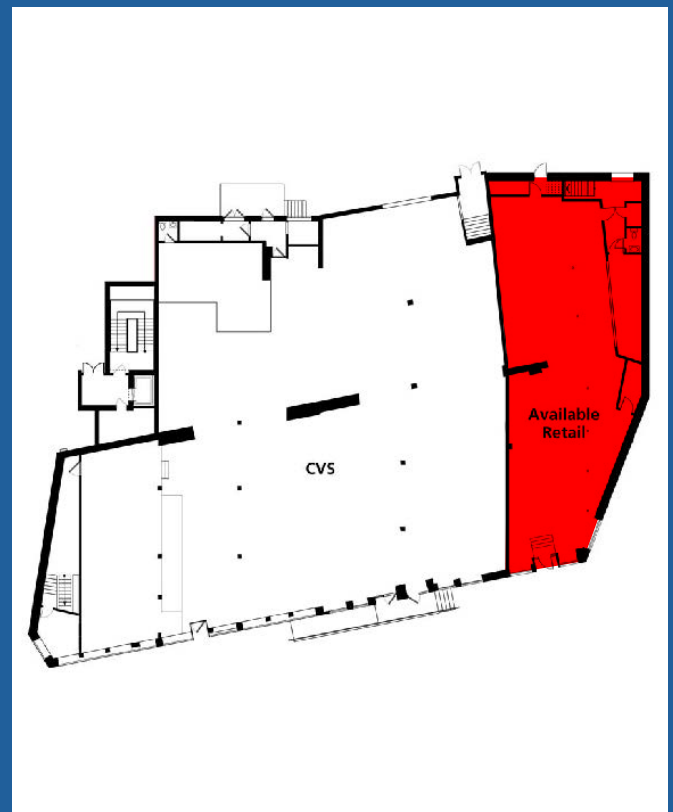


Commonwealth
Commercial Advisors





- 3,000 SF Prime Retail/Office Space Adjacent to High-Volume CVS
- Great Corner Location with Two Private Entrances
- Outstanding Visibility
- Abundant On-site Parking
- Handicapped Accessible
- Basement Storage
- Area businesses include Dunkin Donuts, Sweet Tomatoes Pizza, Bank of America, Boston Sports Club, Sullivan Tire and Blue Ribbon BBQ.



Commonwealth
Commercial Advisors

Tim Coyle
Senior Vice President

195 Worcester Street, Suite 201
Wellesley, MA 02481

617-970-7232

tcoble@ccadvisors.net
www.ccadvisors.net