

# PRIME OFFICE/RETAIL SPACE FOR LEASE

## 645 MASSACHUSETTS AVE, CAMBRIDGE

Available NOW

2,259 SF with street level entrance

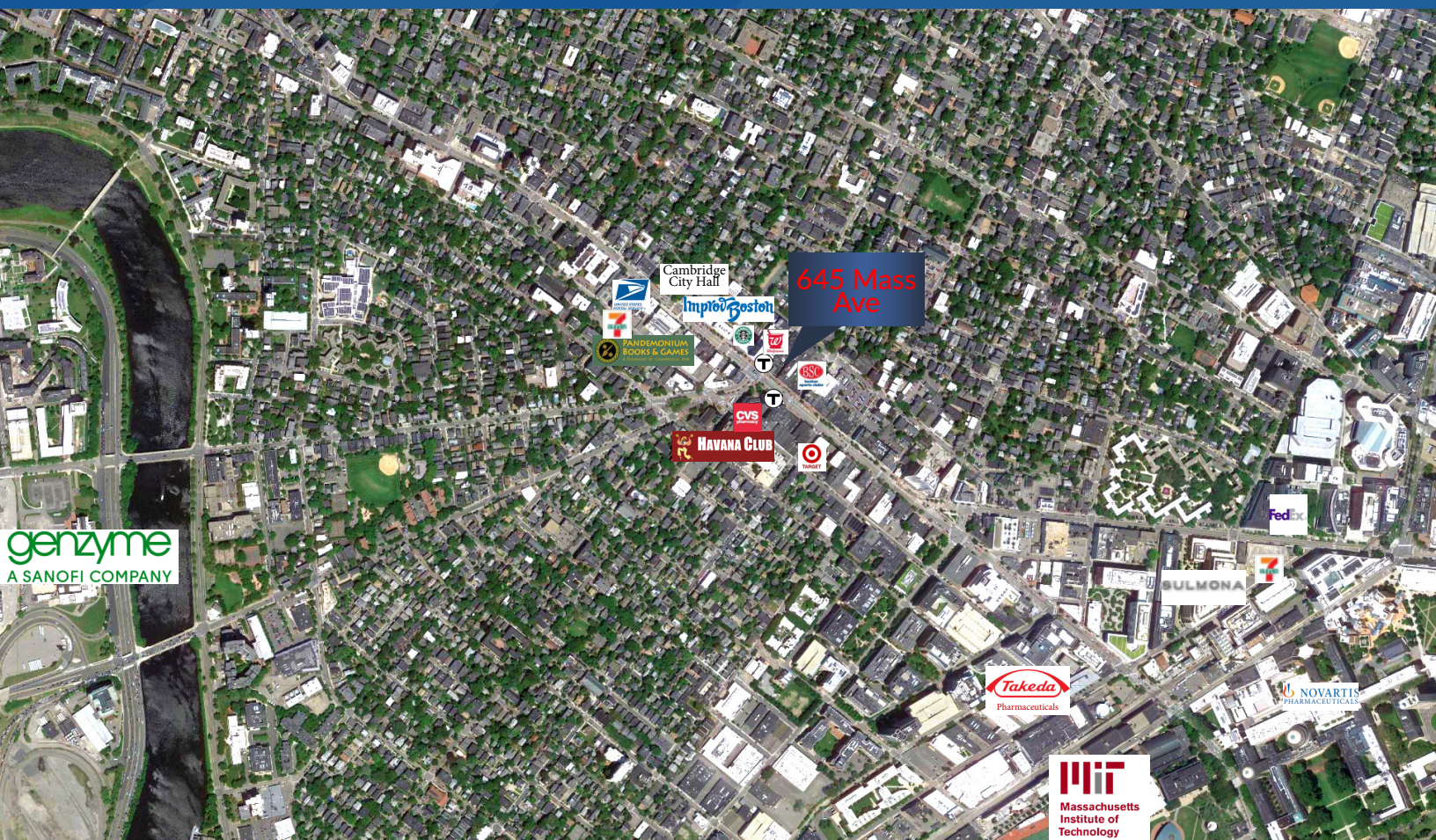
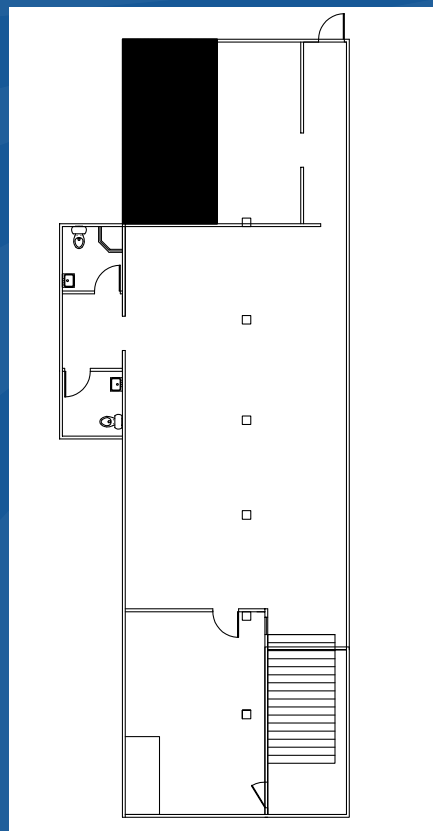


Commonwealth  
Commercial Advisors



Commonwealth Commercial Advisors is pleased to announce the availability of a prime office/retail space in Central Square. This lower level suite offers an outstanding opportunity for businesses looking for affordable space in an amenity-rich neighborhood. Just reduced to \$25/SF plus utilities!

- 2,259 SF of lower level space with entrance and signage at street level
- Landlord will be installing new ADA accessible stair lift.
- Mostly open layout with private bathrooms.



Commonwealth  
Commercial Advisors

Tim Coyle  
Senior Vice President

195 Worcester Street, Suite 201  
Wellesley, MA 02481

617-970-7232

tcoble@ccadvisors.net  
www.ccadvisors.net