

# FOR LEASE 1,065 SF

Office/Medical/Service Retail

## PREMIER LOCATION

## 386 WASHINGTON STREET WELLESLEY, MA



## PROPERTY OVERVIEW

Commonwealth Commercial Advisors is pleased to announce the availability of first floor office space at 386 Washington Street in the heart of Wellesley. This space offers an outstanding opportunity for businesses looking for a customer-convenient property at a highly visible location. Walk to service retailers (banks, gyms, Post Office, etc.) as well as markets and restaurants including Whole Foods, The Local Kitchen and Caffe Nero. This is an outstanding opportunity to locate your business in one of the country's most affluent communities.

- ✧ Playhouse Square
- ✧ 386 Washington Street, Wellesley, MA
- ✧ 1,065 SF Available on the First Floor
- ✧ Adapts to Office, Medical & Retail Uses
- ✧ Ample Parking (4.4 spaces/1,000 SF)
- ✧ Signage/Branding Opportunity
- ✧ Join Dynamic Center with Many Outstanding Co-Tenants
- ✧ Across the street from MBTA station



Commonwealth  
Commercial Advisors

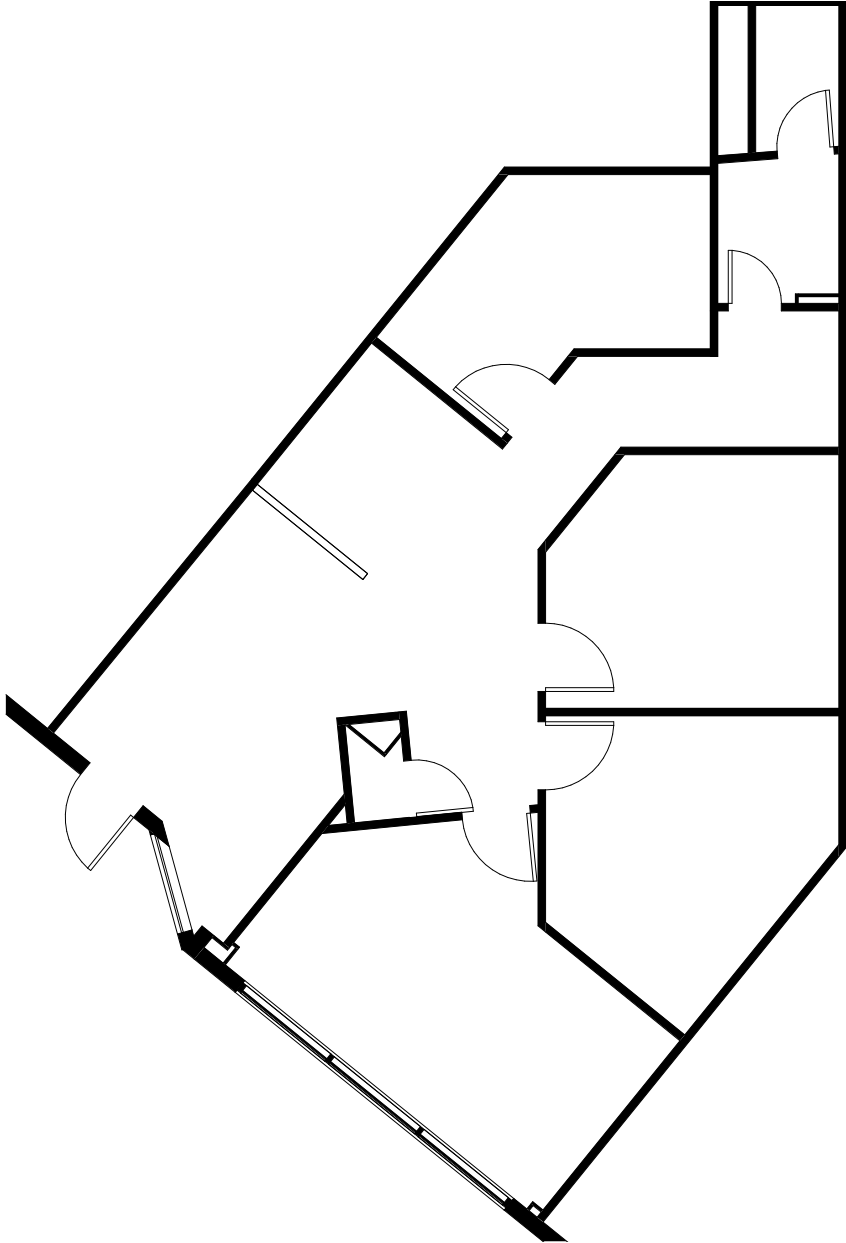
[ccadvisors.net](http://ccadvisors.net)


 **INTRUM**  
REAL ESTATE MANAGEMENT AND DEVELOPMENT

# FLOOR PLAN

---

**386 WASHINGTON STREET**  
WELLESLEY, MA



 Available Space



Commonwealth  
Commercial Advisors

[ccadvisors.net](http://ccadvisors.net)

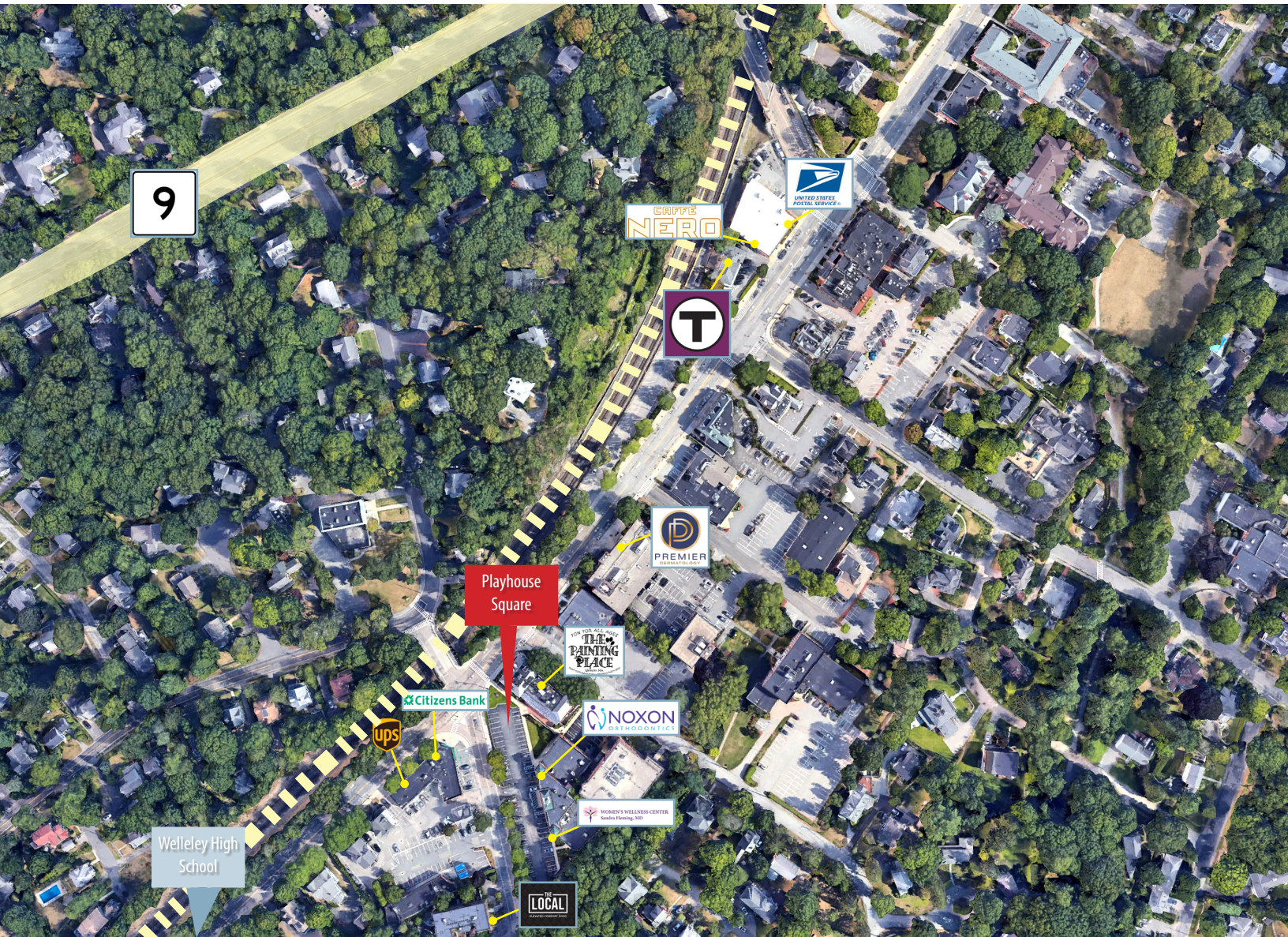
 **INTRUM**  
REAL ESTATE MANAGEMENT AND DEVELOPMENT



# AERIAL VIEW

---

## 386 WASHINGTON STREET WELLESLEY, MA



## CONTACT US

---

TIM COYLE  
617.970.7232  
[tcoble@ccadvisors.net](mailto:tcoble@ccadvisors.net)

©2023 Copyright Commonwealth Commercial Advisors. All information furnished is from sources deemed reliable but no warranty or representation is made to the accuracy.



Commonwealth  
Commercial Advisors

[ccadvisors.net](http://ccadvisors.net)

 **INTRUM**  
REAL ESTATE MANAGEMENT AND DEVELOPMENT