

# Chance to Own a Piece of Boston History

224 Clarendon Street, Boston

2nd Floor, 700 SF



Commonwealth  
Commercial Advisors

Office Condo FOR SALE  
Overlooking Newbury Street





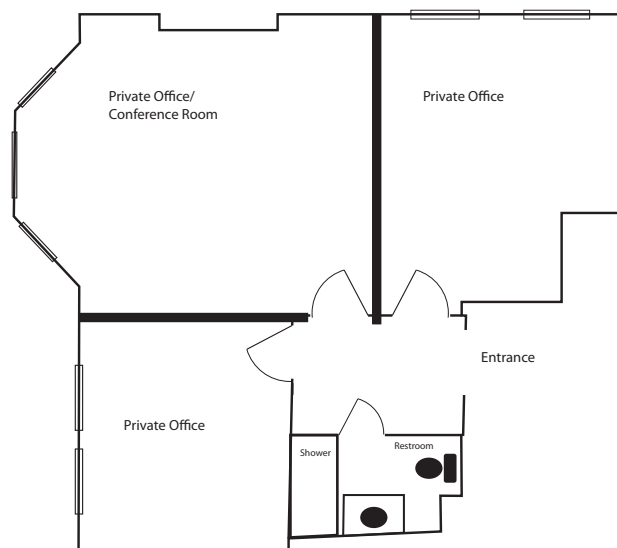
**224 Clarendon Street** represents a unique opportunity to own a piece of Historic Back Bay. Enjoy roughly 700 square feet of office space on the second floor with high ceilings and gorgeous sun-lit bay windows looking out over Newbury Street. This coveted piece of real estate boasts a premier location that is second to none with easy commuter access to the Green Line, Orange Line and Back Bay Station. Grab a coffee at one of the many coffee shops, meet with clients at any number of great restaurants or enjoy as much shopping as you can handle. Newbury Street & the Back Bay has it all!

**Purchase Price: \$665,000**



## SPECS

- 700 SF Back Bay Office Condo on 2nd Floor
- Overlooking Newbury and Clarendon
- Three private offices/full bathroom
- Detailed millwork and moldings
- Elevator building
- Condo fee: \$609/month
- Annual taxes approximately: \$8,500



**Commonwealth  
Commercial Advisors**

**Thomas Robinson, Vice President**  
**Stefan Frey, Principal**

195 Worcester Street, Suite 201  
Wellesley, MA 02481

617-504-4015  
617-596-7833

trobinson@ccadvisors.net  
www.ccadvisors.net